

### Aseptic fittings for Orbital welding DIN 11865

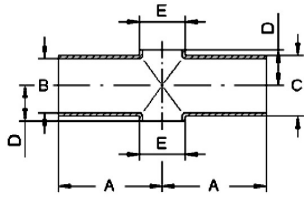
Art.No

EUR

Art.No

EUR

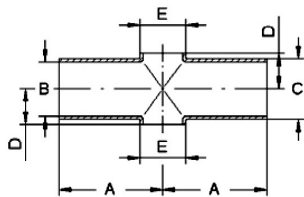
Reducing cross piece  
ASME, short, H3



DN	A	B	C	D	E			AISI316L-1.4435	
3/4"-1/2"	51	15,75	19,05	11	12,7x1,65			490105	Enquiry
1"-1/2"	54	22,1	25,4	14	12,7x1,65			490106	Enquiry
1"-3/4"	54	22,1	25,4	14	19,05x1,65			490107	Enquiry
1,5"-3/4"	60,3	34,8	38,1	21	19,05x1,65			490108	Enquiry
1,5"-1"	60,3	34,8	38,1	21	25,4x1,65			490116	Enquiry
2"-1"	73	47,5	50,8	29	25,4x1,65			490118	Enquiry
2"-1,5"	73	47,5	50,8	29	38,1x1,65			490119	Enquiry
2,5"-1"	80	60,2	63,5	35	25,4x1,65			490109	Enquiry
2,5"-1,5"	80	60,2	63,5	35	38,1x1,65			490120	Enquiry
2,5"-2"	80	60,2	63,5	35	50,8x1,65			490121	Enquiry
3"-1,5"	85	72,9	76,2	43	38,1x1,65			490122	Enquiry
3"-2"	85	72,9	76,2	43	50,8x1,65			490123	Enquiry
3"-2,5"	85	72,9	76,2	43	63,5x1,65			490124	Enquiry
4"-2"	105	97,38	101,6	57	50,8x1,65			490110	Enquiry
4"-2,5"	105	97,38	101,6	57	63,5x1,65			490125	Enquiry
4"-3"	105	97,38	101,6	57	76,2x1,65			490126	Enquiry

Similar to DIN 11865

Reducing cross piece ISO,  
short, H3



DN	A	B	C	D	E			AISI316L-1.4435	
10-8	34	14	17,2	10	13,5x1,6			490229	Enquiry
15-10	36	18,1	21,3	12	17,2x1,6			490259	Enquiry
20-10	55	23,7	26,9	15	17,2x1,6			490260	Enquiry
20-15	55	23,7	26,9	15	21,3x1,6			490261	Enquiry
25-10	60	29,7	33,7	18,5	17,2x1,6			490262	Enquiry
25-15	60	29,7	33,7	18,5	21,3x1,6			490263	Enquiry
25-20	60	29,7	33,7	18,5	26,9x1,6			490264	Enquiry
32-15	65	38,4	42,4	23	21,3x1,6			490265	Enquiry
32-20	65	38,4	42,4	23	26,9x1,6			490266	Enquiry
32-25	65	38,4	42,4	23	33,7x2			490267	Enquiry
40-15	65	44,3	48,3	27	21,3x1,6			490268	Enquiry
40-20	65	44,3	48,3	27	26,9x1,6			490269	Enquiry
40-25	65	44,3	48,3	27	33,7x2			490270	Enquiry
40-32	65	44,3	48,3	27	42,4x2			490271	Enquiry
50-15	90	56,3	60,3	34	21,3x1,6			490234	Enquiry
50-20	90	56,3	60,3	34	26,9x1,6			490235	Enquiry
50-25	90	56,3	60,3	34	33,7x2			490272	Enquiry
50-32	90	56,3	60,3	34	42,4x2			490273	Enquiry
50-40	90	56,3	60,3	34	48,3x2			490274	Enquiry
65-25	110	72,1	76,1	43	33,7x2			490275	Enquiry
65-32	110	72,1	76,1	43	42,4x2			490276	Enquiry
65-40	110	72,1	76,1	43	48,3x2			490277	Enquiry
65-50	110	72,1	76,1	43	60,3x2			490278	Enquiry
80-25	130	84,3	88,9	49,5	33,7x2			490279	Enquiry
80-32	130	84,3	88,9	49,5	42,4x2			490280	Enquiry
80-40	130	84,3	88,9	49,5	48,3x2			490281	Enquiry

Similar to DIN 11865

**LINNEMANN**  
Rohrverbindungen • Edelstahlarmaturen  
Pipe connections • Stainless steel fittings

LINNEMANN GmbH • Heerweg 14-16  
72070 Tübingen / Germany

Fon: +49 (0) 7071 97555-0  
Fax: +49 (0) 7071 97555-10

E-Mail: info@linnemann-online.com  
Internet: www.linnemann-online.com

## Aseptic fittings for Orbital welding DIN 11865

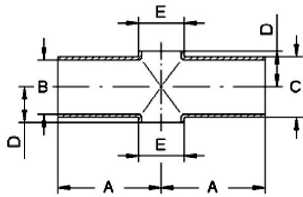
Art.No

EUR

Art.No

EUR

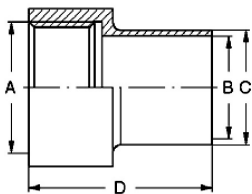
Reducing cross piece ISO, short, H3



DN	A	B	C	D	E	Art.No	EUR	AISI316L-1.4435	EUR
80-50	130	84,3	88,9	49,5	60,3x2			490282	Enquiry
80-65	130	84,3	88,9	49,5	76,1x2			490283	Enquiry
100-50	160	109,7	114,3	63	60,3x2			490284	Enquiry
100-65	160	109,7	114,3	63	76,1x2			490285	Enquiry
100-80	160	109,7	114,3	63	88,9x2,3			490286	Enquiry

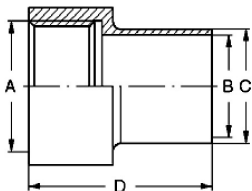
Similar to DIN 11865

Welding socket DIN, G H3



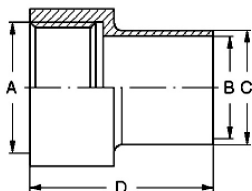
DN	A	B	C	D	Art.No	EUR	AISI316L-1.4435	EUR
10	G 1/4"	10	12	40			484714	Enquiry
10	G 3/8"	10	13	40			484730	Enquiry
15	G 1/2"	16	19	40			484731	Enquiry
20	G 3/4"	20	23	45			484732	Enquiry
25	G 1"	26	29	50			484733	Enquiry
32	G 1,25"	32	35	58			484734	Enquiry
40	G 1,5"	38	41	55			484735	Enquiry
50	G 2"	50	53	58			484736	Enquiry

Welding socket ASME, G H3



DN	A	B	C	D	Art.No	EUR	AISI316L-1.4435	EUR
1/2"	G 1/4"	9,4	12,7	40			484801	Enquiry
3/4"	G 1/2"	15,75	19,05	40			484802	Enquiry
1"	G 3/4"	22,1	25,4	45			484803	Enquiry
1,5"	G 1,5"	34,8	38,1	55			484804	Enquiry
2"	G 2"	47,5	50,8	58			484805	Enquiry

Welding socket ISO, G H3



DN	A	B	C	D	Art.No	EUR	AISI316L-1.4435	EUR
8	G 1/4"	10,3	13,5	40			484929	Enquiry
10	G 3/8"	14	17,2	40			484930	Enquiry
15	G 1/2"	18,1	21,3	40			484931	Enquiry
20	G 3/4"	23,7	26,9	45			484932	Enquiry
25	G 1"	29,7	33,7	50			484933	Enquiry
32	G 1,25"	38,4	42,4	58			484934	Enquiry
40	G 1,5"	44,3	48,3	55			484935	Enquiry
50	G 2"	56,3	60,3	58			484936	Enquiry